



TOMODACHI

TOMODACHI
ANNUAL

★
20
22
○

INITIATIVE
REPORT

Fostering Future Leaders

Dear Friends,

Thank you for your support of the TOMODACHI Initiative, a public private partnership that has become one of the most enduring and vibrant outcomes of the recovery and rebuilding efforts following the Great East Japan Earthquake. Since 2011, we have seen the successes that have come and the determination of people in rebuilding their lives, their families, and their communities. Much of the success in the region's development is a direct result of what young people were doing, and continue to do, every day.

With the lifting of travel restrictions in 2022, many of our programs and activities were not able to just resume, but they became bigger and better than before.

This October, the U.S.-Japan Council held its Annual Conference in Tokyo. While many members were delighted to see each other again after such a long time apart, all 700 attendees were equally thrilled to hear from two young Japanese leaders of the TOMODACHI Generation. One alumnus is now a youth advocate in the Tohoku region, working for an educational non-profit organization; the other is a high school student from Kansai who visited the United States for the first time on a TOMODACHI program. As leaders of the next generation, they inspired the audience to work together to build a bright and wonderful future.

Over the years, the TOMODACHI Initiative has expanded, building on its Tohoku roots with programs focused on diverse communities—young women, budding entrepreneurs, service-oriented students, youth leaders with disabilities, and more. Our programs invite young people to grow as leaders and provide them with the skills and opportunities to become bridges between the United States and Japan, producing a ripple effect to positively impact the rest of the world.

This year, TOMODACHI Initiative launched a new strategic program funded by the generous and visionary philanthropist, Mr. Toshizo Watanabe. The TOMODACHI Toshizo Watanabe Leadership Program brought high school students from throughout Japan to Los Angeles for a program of homestay, university visits, and lessons in diversity and leadership. We hope they will each find a way to study abroad in the United States to build on the experience.

We also launched our TOMODACHI - U.S. Embassy Go for Gold Sports Leadership Program to introduce Japanese sports management students to U.S. approaches and enrich post-Tokyo 2020 Olympic innovation in Japan, while looking ahead to the 2028 Summer Olympic games in Los Angeles. Sports are one of the most effective ways to connect cultures and build leaders.

Nearly 10,000 young people are now a part of the TOMODACHI Generation. The TOMODACHI Alumni Regional Framework plays a vital role connecting these young people through towns and cities. And now that the framework has been expanded, to locations in the United States.

We are grateful to our founders, sponsors, implementing organizations, advisors, and supporters for their vision and generous support, allowing us to witness these next-generation leaders' growth. The U.S.-Japan Council and the U.S. Embassy in Tokyo are proud to work with the Government of Japan and our many partners in contributing to society through our mission to develop young leaders for the United States and Japan. We sincerely appreciate your commitment to the future of the U.S.-Japan relationship.

Sincerely,

Rahm Emanuel
U.S. Ambassador to Japan
U.S. Embassy, Tokyo

Suzanne Basalla
President & CEO
U.S.-Japan Council



"Operation Tomodachi was a sprint, an immediate response to the disaster, and the TOMODACHI Initiative is a marathon to create a long-lasting impact on our society. Therefore, we expect you to be marathon runners to continue making an impact on the community."

~ Junko Tsuda



Our Mission

The TOMODACHI Initiative is a public-private partnership between the U.S.-Japan Council and the U.S. Embassy in Tokyo, with support from the Government of Japan. Born out of support for Japan's recovery from the Great East Japan Earthquake, TOMODACHI invests in the next generation of Japanese and American leaders through educational and cultural exchanges and leadership programs.

Our History

In the aftermath of the Great East Japan Earthquake of March 11, 2011, the United States military and Japan Self-Defense Forces worked together successfully in Operation Tomodachi to provide immediate humanitarian relief to the Tohoku region. Building upon this cooperation and spirit of friendship, the United States and Japan launched the TOMODACHI Initiative. TOMODACHI is led by the U.S. Embassy in Tokyo and the U.S.-Japan Council, a tax-exempt non-profit organization, and is supported by the Government of Japan, corporations, organizations, and individuals from the United States and Japan.

Our Vision

We seek to foster a "TOMODACHI Generation" of young American and Japanese leaders who are committed to and engaged in strengthening U.S.-Japan relations, appreciate each other's countries and cultures, and possess the global skills and mindsets needed to contribute to and thrive in a more cooperative, prosperous, and secure world.

Our Future

Going forward, the TOMODACHI Initiative will continue to be a model for innovative public-private partnerships. We will develop and design programs that support U.S.-Japan cross-cultural youth leadership development, especially alumni programs that foster the TOMODACHI Generation while enriching and increasing collaboration with U.S.-Japan-related organizations.

Our Programs

Educational Programs provide opportunities for students to study abroad and gain exposure to each other's countries.

Cultural Programs in sports, music, and the arts provide gateways for Japanese and Americans to learn about and develop an enduring interest in each other's cultures.

Leadership Programs help the next generation of entrepreneurs and young leaders develop skills and expertise that will guide them toward success.

Alumni Programs provide TOMODACHI alumni with the skills, opportunities, and confidence to achieve their dreams while becoming the next generation of cross-cultural leaders.



The TOMODACHI Journey

TOMODACHI supports cross-cultural youth leadership development throughout a lifetime of experiences.





Engaging Partners
for Enduring Impact

The TOMODACHI Initiative’s Strategic Partners provide generous support that enables Japanese and American participants to travel and study abroad and gain exposure to each other’s countries. They range from high school students to young professionals. In 2022, 121 participants participated in 13 different programs, and 484 participated in TOMODACHI events.

TOMODACHI programs offer global expertise and leadership skills while building lasting friendships among participants. After the programs are complete, alumni of the “TOMODACHI Generation” are engaged and empowered through their participation in alumni events, workshops, and programs.



TOMODACHI Amway Japan Foundation Tohoku Future Leader Program

Initiated in 2019, this program aims to foster next-generation leaders seeking to revitalize the Tohoku region, especially its tourism industry. Training programs in Japan and the United States enabled participants to revive and rediscover the charms of their local communities. Engaging with local students in the U.S. also led to developing unique projects for their communities.



TOMODACHI Boeing Keio SFC Entrepreneurship Seminar

This program is for high school students, undergraduate students and graduate students to pursue their interest in entrepreneurship to contribute to society. Students are divided into groups to build their own business plans to see their ideas become realities and they take part in a series of online seminars.



Building the TOMODACHI Generation: Morgan Stanley Ambassadors Program

The program was held after a one and a half year hiatus due to COVID-19. Eight university students from Japan and six U.S. students participated in an intensive two-week program in Washington, D.C. They studied civil society, cross-sector partnerships, and how to leverage that understanding to address social challenges in Japan and the United States with students in the U.S.



TOMODACHI Goldman Sachs Music Outreach Program

Introduced in 2013 to support children in Fukushima, Miyagi, and Iwate prefectures affected by the Great East Japan Earthquake, this programs helps Japanese and American youth communicate through the language of music and performing arts while deepening cultural and self-understanding. The students enjoyed singing, dancing, and pantomiming with an American performing education group.



TOMODACHI Lawson Global E-workshop with HEART Global.

This program was hosted online in February 2022 with sixteen families from Iwate, Miyagi and Fukushima prefectures participating. The event was created in order to connect children from the Tohoku Region with the world. Thirty-four participants enjoyed themselves by singing and dancing with HEART global members from around the world for two hours.



TOMODACHI MUFG International Exchange Program

In its 11th year, this cultural exchange program for high-school students is followed by three sessions on “Leadership and Resiliency.” Students learned about Japanese American history and the Great East Japan Earthquake from a USJC member and three alumni, and also learned about high school life in Japan. American and Japanese students cultivated friendships by sharing interests and found countless similarities despite cultural differences.



TOMODACHI Summer SoftBank Leadership Program

Established in 2012, this three-week program encourages Japanese students affected by the Great East Japan Earthquake to explore leadership skills at the University of California, Berkeley. Interaction, observation, and cultural exposure help them understand how they can support their hometowns.



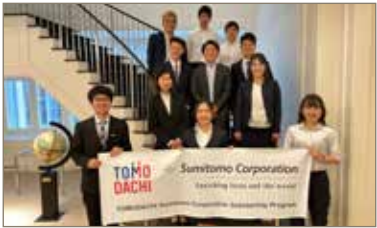
TOMODACHI J&J Disaster Nursing Training Program

The program started in 2015 and aims to deepen nursing students’ knowledge of disaster nursing. This year’s underlying theme of the six-month program was to develop leadership skills, care for themselves as responders, and treat the emotional and psychological damage of all those involved in disasters.



TOMODACHI MetLife Women’s Leadership Program

This ten-month-long program, aimed at developing the next generation of global female leaders, was held virtually across Osaka, Tokyo, Fukuoka, Naha, and Sapporo, with sessions on mentorship, leadership style, the U.S. trip, and group presentations. Participants gained essential skills such as self-awareness, collaboration, pay it forward, global perspective, and resilience, all of which will benefit them in the future workplace.



TOMODACHI Sumitomo Corporation Scholarship Program

This program, implemented in 2014, provides an annual scholarship for Japanese students to study at U.S. universities for one year. The program aims to nurture next-generation leaders with an international perspective. The scholarship recipients also have the opportunity to participate in a five-day-training in New York, including a visit to Sumitomo Corporation of Americas.



TOMODACHI-UNIQLO Fellowship

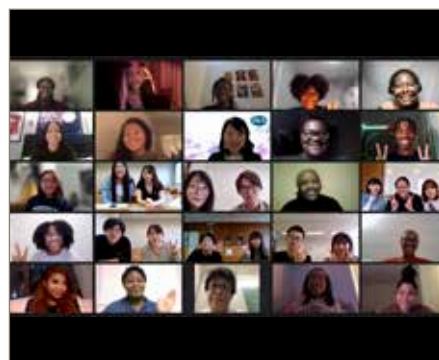
This program offers Japan’s next generation of business and fashion leaders a top U.S. graduate education in fashion. In 2022, the program supported one student studying at Parsons School of Design.

Developing Cross-Cultural Leaders

Three General Fund Programs were conducted in 2022. Contributions from donors made it possible to execute educational exchanges, leadership development programs, and cross-cultural programs.

TOMODACHI KAKEHASHI Inouye Scholars Program

This program is a youth exchange that provides American and Japanese university students an opportunity to learn about one another's countries and cultures. Initiated in 2014, the goals of the program are to honor the life and legacy of Senator Daniel K. Inouye and offer the participants an opportunity to learn about his contribution to his country, heritage, and the U.S.-Japan relationship.



TOMODACHI Story Jam for Youth with Disabilities

This digital storytelling and leadership program was held for ten young Japanese and American professionals and students with disabilities. Guest lecturers such as disabled journalists, social media influencers, advocates, and activists all shared their experiences. They encouraged participants to bring change, asking them to share their stories with the world.



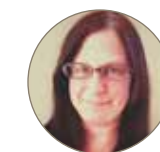
TOMODACHI-STEM Women's Leadership and Research Program

This program offers internship opportunities and a cultural and leadership program for Japanese female university students. Virtual workshops and sessions allowed them to prepare for in-person internships and research groups, complete a personal development tool, and prepare for going to Lehigh University and Rice University in the U.S. in February 2023.



"People who are involved in TOMODACHI have a very strong connection to their local community to make Japan and the world the best they can be, and help every single person reach their full potential through their different interests."

~ Christine Pearson Ishii



New Programs

TOMODACHI Toshizo Watanabe Leadership Program



The TOMODACHI Initiative and the Toshizo Watanabe Foundation (Chairman, Toshizo Watanabe) established "the TOMODACHI Toshizo Watanabe Leadership Program in 2022. The program is for high school students from all over Japan who are the next generation leaders. Through homestays, school visits, and taking part in training sessions in the United States, they will engage with people in the local community, be exposed to the history and diverse cultures of the country, and acquire different perspectives and leadership skills.

From August 10 to 20, fourteen high school students participated in the program in California. All students made presentations in English about the learnings gained through their time in the program. One student reflected, "[I learned that] a leader is someone who notices differences, thinks about and respects other perspectives. This program has strengthened my desire to go abroad in the future." After their return, the students shared their experiences in the program with their respective high schools. They learned even more by verbalizing and presenting their own experiences.

TOMODACHI-U.S. Embassy Go for Gold Sports Leadership Program

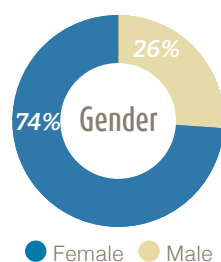


The TOMODACHI-U.S. Embassy Go for Gold Leadership Program kicked off in 2022 and aims to increase the understanding and knowledge of the sports industry in the United States, focusing on facility management, community engagement, and business of sports management among Japanese youth. The program is designed to inspire next-generation leaders through the power of sports by exposing Japanese college students to the sports business in America, spending one week each in Los Angeles and New York. Upon their return, participants are encouraged to use the knowledge acquired to advance the global sports industry.

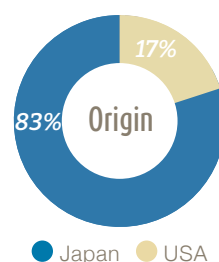
Ten students studying sports were selected for the program's first cohort. They met virtually for the first program orientation on December 17 to hear from speakers who provided an overview of Japan's current sports management and events. Subsequently they will meet in January and February next year to prepare for their upcoming U.S. Study Tour. After all three orientations, the students will travel to the United States in February and March 2023.



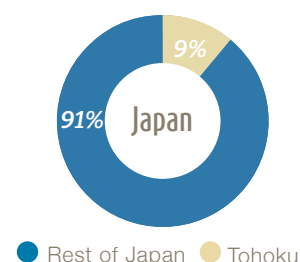
74% Female



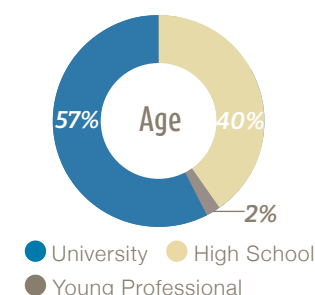
83% Japan



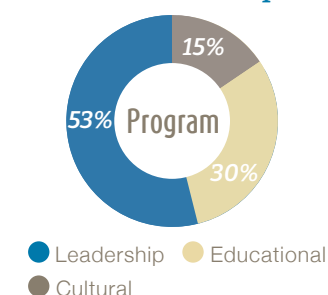
91% Non-Tohoku



57% University



53% Leadership



9,978 program participants

359 programs

45,995 program and event participants

Ongoing Engagement

For the TOMODACHI Alumni community, 2022 stands as an exemplar year of engagement and collaboration. As the world emerged from the shadow of COVID-19 and restrictions gradually dissipated, the alumni community seized the opportunity to host an unprecedented number of events compared to prior years.

Both U.S. and Japanese government representatives joined numerous in-person gatherings, while an impressive doubling of alumni participation invigorated community engagement and leadership training initiatives. This surge of enthusiasm culminated in the highly successful Next Generation Summit. Moreover, 2022 heralded the expansion of the innovative TOMODACHI Alumni Regional Framework to the United States, fostering connections between community leaders across Japan and the United States. This framework embodies the unwavering commitment of both nations, through people-to-people ties, to nurture and empower youth and emerging leaders at the grassroots level.

The TOMODACHI alumni programs owe their existence to the generous support of Prudential, whose generosity continues to pave the way for future generations of global leaders.

Core Values



Workforce Readiness

As leaders of the next generation, we prepare our alumni to become global jinza (global citizens) by providing them with the requisite knowledge, skills, and abilities to thrive with a focus on mentorship and peer-to-peer leadership opportunities.



Critical & Innovative Thinking

Out-of-the-box, critical and innovative thinking provide successful and efficient problem-solving skills that are the keys to prosperity in the twenty-first century, and we aim to arm our alumni with these traits.



Civic Engagement

Building upon the global experiences participants gained through TOMODACHI programs, we hope alumni will make a difference in their communities through the development of knowledge, skills, values, and motivation.

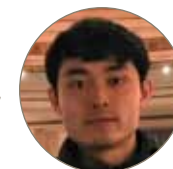


Connectedness & Sustainability

As members of the TOMODACHI Generation, alumni will connect with each other to expand their networks and stay engaged as members and leaders of their communities, and really build on those people-to-people relations.

"TOMODACHI is a community where alumni can expand their connections and improve each other. Before the pandemic, there were opportunities for BTG alumni to get together in various places in Japan, and I was able to get to know alumni of various ages and industries."

~ Teruki Akao



Alumni Highlights



TOMODACHI Alumni Regional Framework

The TOMODACHI Alumni Regional Framework, with support from U.S. and Japanese Consulates and Embassies, builds and bolsters the TOMODACHI community in regions across Japan, and now the United States, to cultivate relationships between alumni. Under this framework, alumni chosen to become Regional Representatives of their respective regions bring together alumni for networking and skills-building events, and share opportunities to support the community and empower future leaders. This Framework was expanded from Japan to the United States for the first time in 2022.



Next Generation Summit

In an annual event, the TOMODACHI alumni from across different regions, both domestic and international, gathered both in-person and virtually to discuss the current status and future of U.S.-Japan relations. The theme of the 2022 Summit was "the Next Age of Leadership," and TOMODACHI alumni to reconnect, inspired by new people from the USJC community, Watanabe scholars, and supporters.



TOMO-KIN

The results of the 2021 Alumni Survey showed that while the community appreciated the high-profile opportunities provided by TOMODACHI and the U.S.-Japan Council, there was a great interest in more casual gatherings. To respond to this need, TOMO-KIN (TOMODACHI + Kinship) was created as a safe space and casual gathering for the TOMODACHI alumni community to connect across industries, sectors, and interests. Each event has a theme, highlights a speaker from the community, and involves networking games and opportunities for about 30 people that join each time.



Career Talks

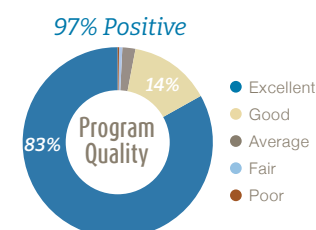
Begun in August 2021, Career Talks has invited many speakers from staff to U.S.-Japan Council members, and TOMODACHI donors and supporters, as well as influential individuals representing U.S.-Japan relations. The speakers have shared their career journeys starting with a brief overview of their current role, career path, and finally share their life lessons to TOMODACHI alumni who receive the knowledge and inspiration to gain new interests and pursue their dreams.



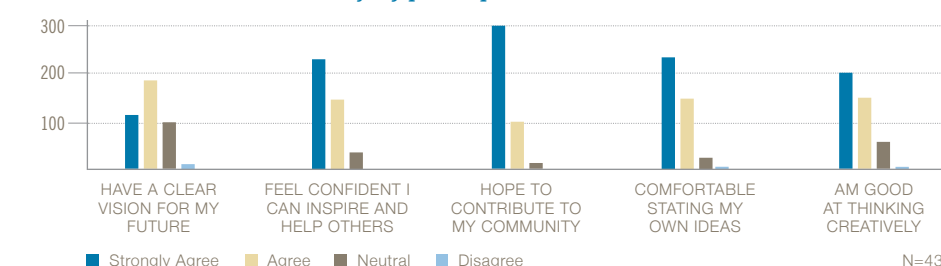
U.S. Ambassador in Tohoku for 3.11

In March 2022, newly appointed U.S. Ambassador to Japan Rahm Emanuel visited Kessennuma, Miyagi Prefecture on the 11th year of the Great East Japan Earthquake and met with young leaders of the TOMODACHI Generation who were making impact in the fields of education and sustainability. The Ambassador noted that Tohoku's recovery had been achieved through the determination of such young people to rebuild their lives, families, and communities.

Post Program Survey Highlights



Because of my participation in TOMODACHI I...





Jennifer Butler

“I like living and working in Japan, and I can have a community of people that understand that same interest. I think that’s important. TOMODACHI alumni activities help to expand that community.”

Jennifer Butler is a TOMODACHI alumna of the TOMODACHI-Mitsui & Co. Leadership Program 2014 and has been involved in the TOMODACHI community in various ways ever since. She is passionate about the field of education and has worked in various areas.

Having experienced several TOMODACHI programs, such as being a group lead and participant, can you share your experience from TOMODACHI?

Because I had seen things from the outside and the inside of TOMODACHI, when I finally was able to bring my own students from the university, I understood what I hoped they would gain from the program. They were able to have a good experience, and they realized staying connected with TOMODACHI even after the program is also important.

Why do you value your connection with TOMODACHI?

One of the things is the sense of community and being with people that can understand you. Also, there is interest in Japan and the U.S. or an understanding that the US-Japan relationship can connect us on a person-to-person level. This is the common area to start with for all of the things that we’re going to do afterward. Being a part of TOMODACHI means you have a space where you don’t have to explain this interest. I like living and working in Japan, and I can have a community of people that understand that same interest. I think that’s important. TOMODACHI Alumni activities help to expand that community. That connection is quite valuable.

Do you have any advice for students who are struggling to find what they want to do in the future?

It’s really hard, and I think it’s okay to be hard. Currently, I’m the Team Director of the Student Support Team in Japan for the Ashinaga Africa Initiative(AAI). We do a lot of support for students who are adjusting to Japan, leadership training and different programs. They have something that they care about, and our idea is to expand their minds so that they can see different ways they can achieve the thing that they care about. There’s not just one path. That process of discovery is part of what students should do because you don’t know everything at the beginning. It’s okay not to know, but the hope is during the time you have, you are exploring different things available out there.



Yuriko Kon

“I loved the program, being able to communicate with everyone in the program, and whoever comes across this program, I would definitely recommend this.”

Yuriko Kon is studying liberal arts with a concentration in economics and political science. She spent time in a U.S. elementary school without knowing English and an ESL program helped her improve her English skills and enjoy school life in the U.S. Upon her return to Japan, she noticed there were students who could not speak Japanese, but schools did not offer any special assistance. From that experience, she became interested in learning to work with civil society to make a social impact. She participated in TOMODACHI Generation: *Morgan Stanley Ambassadors Program 2022*.

How did the program help you get the practical skills and knowledge to solve social issues?

The program helped me in a variety of ways. I learned how to effectively convince someone about ideas that I want to pursue. I also learned more about civil society itself, which was something that I had never heard about, and expanded my knowledge of social issues through listening to many people’s perspectives on the issues and how they look for change.

What was your most memorable experience during the program?

The most memorable experience for me was going to different locations in Washington, DC and listening to people from universities and companies. As I had lived in the United States when I was an elementary school student and visited Washington DC, it was memorable for me. For being able to listen and talk to different people, this was because I had never been able to talk to these types of people in the past before, and as I am living in Japan the people that I had talked to had different perspectives and backgrounds than me, and problems that I had not focused on are sometimes the major problems for them.

Is there anything you’d like to comment on about the program?

I loved the program, being able to communicate with everyone in the program, and whoever comes across this program, I would definitely recommend this.



Sodbayar (Sod) Ganbat

“The TOMODACHI program has truly advanced my leadership and initiative skills pertaining to both school and extracurricular activities.”

Sodbayar (Sod) Ganbat is an alumnus of TOMODACHI MUFG International Exchange Program 2022. The theme was “Leadership and Resiliency” and American high school students from California participated through online programs.

What was the most memorable part of the program?

The most memorable experience I had from the program was listening to the three stories about resilience and leadership from the TOMODACHI alumni. The ability to take initiative was present in their stories and was something that truly resonated with me. Ayaka’s (a Japanese alumna) quote, “Bring back and face the day” was a deep and lasting quote that will guide me through my challenges and struggles.

How did you feel about interacting with Japanese students?

It was an amazing experience. Despite being thousands of miles away from each other, we shared many common interests ranging from our music tastes to our favorite subjects in school. I got the chance to hear about their daily lives and was amazed by the fact that some of them took the train to school. It was a fantastic experience to interact with them to learn about the best Japanese food, and I even learned phrases to use in a ramen shop.

Did the program change your perspective on Japan?

Yes, the program definitely changed my perspective on Japan as a whole. Before joining the program, my only exposure to Japanese culture was the popular childhood animes such as *Pokémon* and *Naruto Shippuden*. However, my knowledge of Japanese culture truly expanded when I talked to Japanese high school students and learned about the various regions that make up Japan. I learned about the differences between student life in America and Japan as well as many celebratory events that are present in their schools.

Is there anything you started because of your experience?

I gained an elevated cultural awareness and interest in hearing about the unique lives of my friends at school. Additionally, as the vice president of my school’s chess club, I have expanded our club globally to countries like India and the Philippines because of the many connections I gained through the lessons learned from the program.

Is there anything you’d like to add about your experience or future endeavors?

The TOMODACHI program has truly advanced my leadership and initiative skills pertaining to both school and extracurricular activities. In the future, I hope to bridge the gap between technology and medicine in order to help the lives of everyone and I know the skills gained from the program will prove to be beneficial in achieving this goal.



Maoko Fujisaki

“One of my achievements was learning to say, “What I am interested in, what I am doing now, and what I want to do in the future” in English.”

Maoko Fujisaki is an alumna of TOMODACHI-STEM Women’s Leadership and Research Program 2021-2022. She had wanted to study abroad for some time and applied without hesitation.

What was the U.S. training experience like?

In my case, I had to change from my first supervisor to a different supervisor halfway through the program. I felt that my research theme was not very interesting to me, and my mentor recommended someone doing research in a different field. In the latter half of the program, I went to lab meetings with the recommended supervisor, received career advice, and became more interested in the theme. I think I gained the ability to actually take action because I was the one who made the contacts and went to see them.

Did you feel any change in yourself after your one-month stay in the U.S.?

There is a limit to what you can do in a month, but I decided to maximize the results I could bring back to Japan. I challenged myself to read papers, asked my supervisor for advice, and even interviewed lab students about why they decided to pursue a Ph.D. I was able to explore what I could do with what I could only do locally in the U.S. and learn how to use my time effectively.

What else did you notice through the program?

Japanese and Taiwanese female university students participated in the program. Since we were all women, I felt more determined to do my best because I had a colleague in the program. I also had the opportunity to listen to female professors talk about how they are building their careers while providing and receiving support. I felt that I should not view my existence as a “female in science” as a negative and should work hard.

Is there anything you have been empowered to do since completing the program?

One of my achievements was learning to say, “What I am interested in, what I am doing now, and what I want to do in the future” in English. Also, I am currently studying at the Technical University of Denmark. When I wanted to do an internship or a project, I challenged myself to change the situation. I sent emails and asked people to introduce any opportunity. When I was introduced to people, I could talk about what I wanted to do in a short time in a concrete way, which is another result of participating in the program in the United States.

Sharing Stories

The 2022 U.S. Japan Council Annual Conference was held in Tokyo. During the Closing Plenary, two of the Japanese TOMODACHI Alumni bravely shared their experiences in English to a audience of over 700 attendees and spoke about the impact that their program had on their lives and future dreams.

Rimpei Takahashi participated in the 2015 TOMODACHI St. Louis-Ishinomaki Grassroots Exchange Program. The program opened his eyes to new opportunities and he actively engaged in various TOMODACHI alumni programs over the years. He acknowledged education is a valuable thing and education can alter people's life and lead people to make a better society. He currently works at NPO Machitoko, an educational nonprofit supporting youth in the Tohoku region based out of Onagawa, Miyagi Prefecture.

“I want them to know and experience other communities around the world and feel that their own town is wonderful.”

Rimpei met Irene Hirano Inouye, founder of the U.S.-Japan Council, in 2016 and was inspired by her words: “You are the future leaders of Tohoku and of Japan. You are the future.” It emboldened him to think of himself as a leader in Tohoku and encouraged him to work hard towards this new goal.

Rimpei told to audience at the conference, “Children from the countryside are becoming adults without knowing the vastness of the world. I want them to know and experience other communities around the world and feel that their own town is wonderful. That is why I want to develop a great educational environment for the children of Onagawa.”

“Taking leadership means doing what you can do for someone else, even if it's a small thing”

Ayaka Ueda is an alumna of the TOMODACHI Toshizo Watanabe Leadership Program 2022. She aspires to be a medical researcher and applied for this program to broaden her view and be a leader with a flexible mindset and various knowledge about the world.

As Ayaka visited the Holocaust Museum and the Japanese American National Museum, she found that people introduced were not famous historically but played an important role for the society. She came to the realization, “taking leadership means doing what you can do for someone else, even if it's a small thing”.

As a leader of the next generation, Ayaka invited the audience and said, “I would like to urge you, once again, to think about what each of us can do for society, and take positive actions. Let's work together to build a bright and wonderful future!”



The U.S.-Japan Council (U.S.) and the U.S.-Japan Council (Japan) work in collaboration with the U.S. Embassy in Tokyo to implement the TOMODACHI Initiative as a public-private partnership. Implementation includes program development and oversight, communications and outreach, marketing, fundraising, donor relations and management, and operations.

The U.S.-Japan Council is a non-profit 501(c)(3) tax-exempt organization headquartered in Washington, DC, with staff across the United States, and Tokyo. The Council is dedicated to strengthening people-to-people connections among Japanese and Americans of all generations. The Tokyo-based U.S.-Japan Council (Japan) is a Public Interest Corporation, Koeki Zaidan Hojin. The two organizations are separate entities, each governed by an independent Board of Directors, which work closely together in the administration of TOMODACHI.

Board of Directors

Board Officers

Suzanne Basalla
Representative Director
President & CEO, U.S.-Japan Council

Henry Seiichi Takata,
Representative Director
Representative Director,
SynTech Japan Co., Ltd.

Norie Iwamoto,
Internal Auditor
Director, Assurance-Technology,
Media, and Telecom,
Price Waterhouse Coopers Arata LLC

Board Members

Takashi Ohde
Advisor, Gakushuin Women's College Institute of International Studies

Jenifer Rogers
General Counsel Asia, Asurion Japan Holdings G.K

Stephen Hiroshi Sakanashi
Director of Marketing & Global Strategy, Matchbox Technologies

Miyuki Tani
Executive Director, Morgan Stanley Capital K.K.

Board of Councilors

Board Officer

Kathy Matsui, *Chair*
General Partner,
MPOWER Partners

Board Members

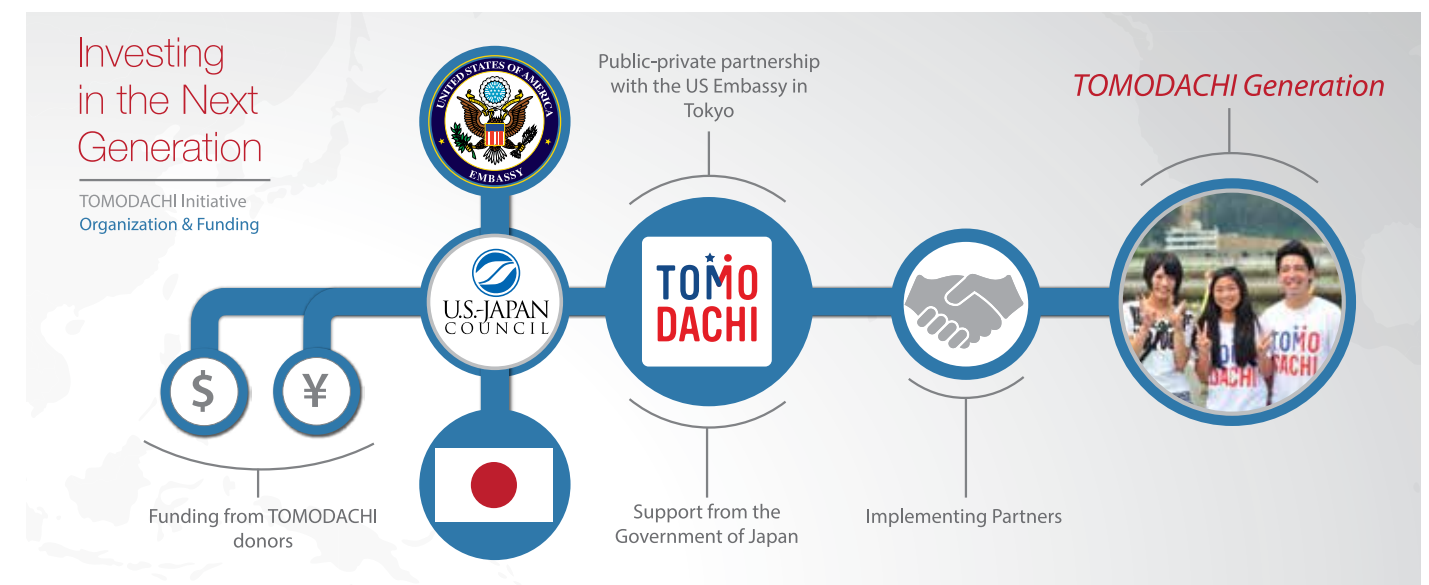
Daniel Fujii
President & CEO,
Trust Capital Co., Ltd.

William Jesus Ireton
Representative Director,
Ireton Entertainment Inc.

Merle Aiko Okawara
Chairman,
DELSOLE Corporation

(as of December 31, 2022)

Our appreciation to the Board of Directors and Councilors of the U.S.-Japan Council in the U.S. for their support. Their names are found at: <https://www.usjapancouncil.org/board-of-directors-us>



Thank You

“For me, TOMODACHI is a place where I can meet new people and new opportunities, and TOMODACHI always keeps me moving in a positive direction.”

~ Honoka Kumazawa



Founding Strategic Partners

(\$1,000,000 or more, with initial donation in 2012)



Sponsors

(\$100,000 - \$1,000,000)



Supporters

(\$10,000 - \$100,000)

All Nippon Airways Co., Ltd.
ExxonMobil Japan
Imperial Hotel, Ltd.
KPMG AZSA LLC
Hayasaka Tax Accountants' Office Co., Ltd.
JACL-Sacramento Chapter to Supporter
Japan Association of Charitable Organizations
Orrick, Herrington & Sutcliffe LLP
Tricor K.K.

TOMODACHI in the Spotlight

We thank our many corporate partners for raising the profile of the TOMODACHI Initiative and spreading the word about the importance of U.S.-Japan youth exchange.



ANA airplanes display the TOMODACHI logo



TOMODACHI signage throughout Haneda Airport

Implementing Partners

TOMODACHI works with many partners in order to make these life-changing experiences possible for young people. In 2023, the following partners implemented programs based on TOMODACHI grants:

Children's National Medical Center | Cultural Vistas | ETIC. (Entrepreneurial Training for Innovative Communities) | Fashion Institute of Technology | General Foundation SFC Forum | The Japanese Association of the Experiment in International Living | Japan International Cooperation Center | Jibun Mirai Club | Lurasian Institution | Lehigh University | Lumina Learning | Parsons The New School for Design | Rice University | University of Massachusetts Boston | The Washington Center | Japanese Association for Sport Management (JASM) | LA84 Foundation | LeadOff Sports | Kinki Nippon Tourist Co., Ltd.

Financial

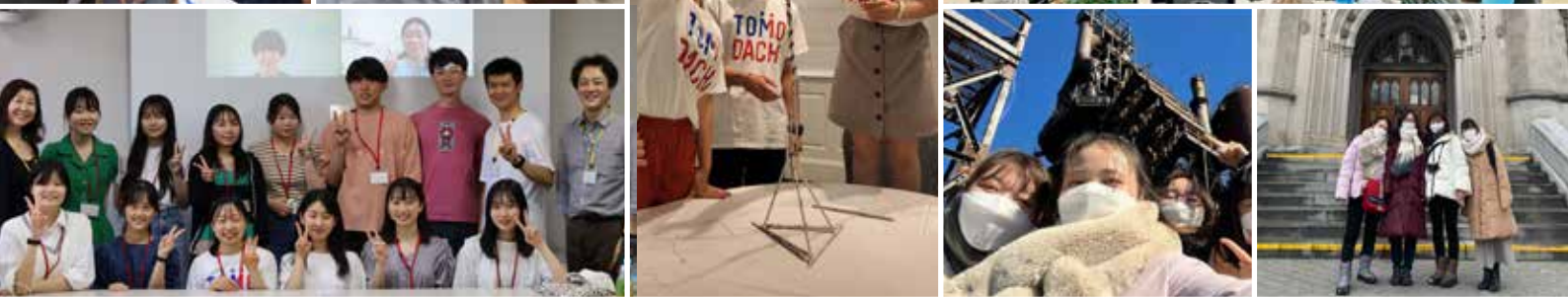
Cumulative TOMODACHI Commitments by Year (USD)
U.S.-Japan Council (Consolidated)

TOMODACHI CONTRIBUTIONS AND PLEDGES	2011-2021	2022	2023-25 (committed)	TOTAL
USJC (Japan)	\$35,010,342	\$898,070	\$1,111,000	\$37,019,412
USJC (US)	23,730,398	445,709	0	24,176,107
Total Contributions and Pledges	58,740,740	1,343,779	1,111,000	61,195,519
In-kind Donations (US-Japan)	5,239,611	0	0	5,259,611
Total Contributions and Pledges	\$63,980,351	\$1,343,779	\$1,111,000	\$66,435,130

Strategic Partners

(\$1,000,000 or more)





 @TOMODACHI

 @USJapanTOMODACHI

 @USJapanTOMODACHI

 @TOMODACHI_initiative

