



TOMODACHI INITIATIVE

★
20
21
●

ANNUAL REPORT



TOMO
DACHI

Fostering Future Leaders

Dear Friends,

In this 2021 annual report, the U.S. Embassy in Tokyo and the U.S.-Japan Council reflect on the achievements and trajectory of the past year—and the past decade—of the TOMODACHI Initiative, a public-private partnership that has become one of the most enduring and vibrant outcomes of the recovery and rebuilding efforts following the Great East Japan Earthquake.

Since its inception, TOMODACHI has offered educational and cultural exchanges and leadership training to more than 9,800 young Japanese and American students – giving them opportunities to build friendships across the Pacific, empowering them with the global mindset and necessary skills to contribute to and thrive in an enormously challenging world, and solidifying the bilateral relationship for the future.

In 2021, while travel continued to be severely limited, TOMODACHI stayed on course by hosting a number of programs online, including a newly established one focusing on Sustainable Development Goals (SDGs) in the Tohoku region, and alumni programs covering a wide variety of themes. On March 11, the U.S.-Japan Council, along with many partner organizations, hosted a commemoration of the 10th anniversary of the earthquake. We were proud to see two TOMODACHI alumni join current and former ambassadors and other distinguished speakers in highlighting the revitalization of Tohoku, the resilience of the U.S.-Japan relationship, and their confidence in the future.

Just as Operation Tomodachi transformed the spirit of friendship between the U.S. military and the Japan Self-Defense Forces into a coordinated, humanitarian relief effort, the TOMODACHI Initiative has been a transformative, collaborative program developing a “TOMODACHI Generation” of leaders. Alumni have started new businesses and partnerships or found other ways to make their voices heard. As one alumnus noted in a keynote speech at USJC’s Next Generation Summit 2021, “We all have influence, every day, every time we buy something, every time we have a conversation, we have a huge influence on those around us...Let’s get out of the mindset that we’re future leaders, we’re current leaders.”

We are extremely grateful to the Government of Japan, the founders, donors, implementing partners, and other organizations and individuals who united behind a shared vision to restore hope and meaning to the lives of young people in the crucible of tragedy. Eleven years later, the U.S. Embassy and the U.S.-Japan Council remain as committed as ever to strengthening the U.S. Japan-relationship and supporting the next generation of leaders through TOMODACHI.

We thank you for your commitment to the future of the U.S.-Japan relationship.

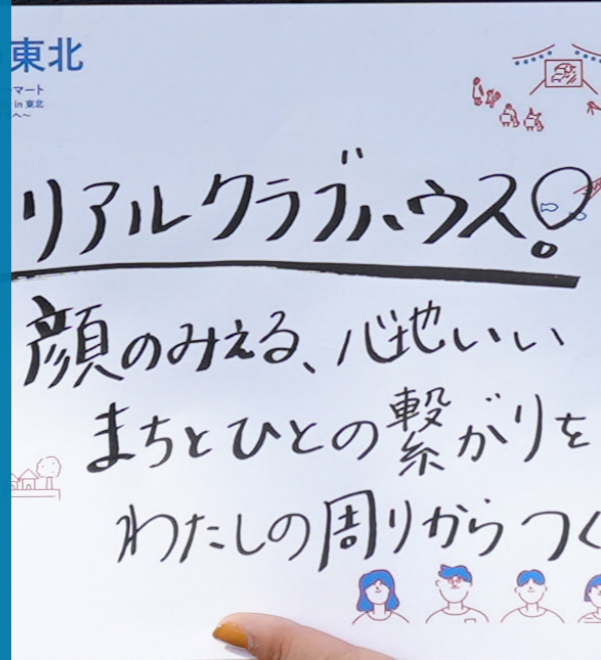
Sincerely,



Rahm Emanuel
U.S. Ambassador to Japan
U.S. Embassy, Tokyo



Suzanne Basalla
President & CEO
U.S.-Japan Council



“TOMODACHI is my motivation. Connecting with many people in TOMODACHI has always given me courage, inspiration, ideas, and knowledge to keep my goals in mind and make my dream come true.”

~ Momoko Tajima



Our Mission

The TOMODACHI Initiative is a public-private partnership between the U.S.-Japan Council and the U.S. Embassy in Tokyo, with support from the Government of Japan. Born out of support for Japan’s recovery from the Great East Japan Earthquake, TOMODACHI invests in the next generation of Japanese and American leaders through educational and cultural exchanges, as well as leadership programs.

Our History

In the aftermath of the Great East Japan Earthquake of March 11, 2011, the United States military and Japan Self-Defense Forces worked together successfully in Operation Tomodachi to provide immediate humanitarian relief to the Tohoku region. Building upon this cooperation and spirit of friendship, the United States and Japan launched the TOMODACHI Initiative. TOMODACHI is led by the U.S. Embassy in Tokyo and the U.S.-Japan Council, a tax-exempt non-profit organization, and is supported by the Government of Japan, corporations, organizations, and individuals from the United States and Japan.

Our Vision

We seek to foster a “TOMODACHI Generation” of young American and Japanese leaders who are committed to and engaged in strengthening U.S.-Japan relations, appreciate each other’s countries and cultures, and possess the global skills and mindsets needed to contribute to and thrive in a more cooperative, prosperous, and secure world.

Our Future

Going forward, the TOMODACHI Initiative will continue to be a model for innovative public-private partnerships. We will develop and design programs that support U.S.-Japan cross-cultural youth leadership development, especially alumni programs that foster the TOMODACHI Generation while enriching and increasing collaboration with U.S.-Japan-related organizations.

Our Programs

Educational Programs provide educational opportunities for students to study abroad and gain exposure to each other’s countries.

Cultural Programs in sports, music, and the arts provide gateways for Japanese and Americans to learn about and develop enduring interest in each other’s cultures.

Leadership Programs help the next generation of entrepreneurs and young leaders develop skills and expertise that will guide them towards success.

Alumni Programs provide TOMODACHI alumni with the skills, opportunities, and confidence to achieve their dreams while becoming the next generation of cross-cultural leaders.



The TOMODACHI Journey

TOMODACHI supports cross-cultural youth leadership development throughout a lifetime of experiences.



- EXPOSURE**
- › Initial contact with foreign culture
 - › Bringing new and diverse voices to the U.S.-Japan relationship

- INSPIRATION**
- › Life-transforming experiences for groups with unmet needs
 - › Cross-cultural experiences for underserved youth

- LEARNING**
- › Opportunities to explore intellectual curiosity
 - › Community service and civic engagement

- ALUMNI**
- › Develop young leaders
 - › Entrepreneurship programs
 - › Women’s mentorship



STRATEGIC PARTNERS

Engaging Partners for Enduring Impact

The TOMODACHI Initiative's Strategic Partners provide continuous support that positively impacts the lives of participants through customized programs offering life-changing opportunities. In 2021, 268 participants, ranging from middle school students to young professionals, took part in our Strategic Partner programs.

These unique programs offer participants the opportunity to gain global expertise and leadership skills, while building lasting relationships and connections. Even after the programs are complete, these diverse alumni of the "TOMODACHI Generation" remain engaged and empowered through their participation in alumni events, workshops, and programs.



TOMODACHI Amway Japan Foundation Tohoku Future Leader Program

Initiated in 2019, this program aims to foster next generation leaders seeking to revitalize the Tohoku region, especially its tourism industry. Training programs in Japan and the United States enabled participants to revitalize and rediscover the charms of their local communities. Engaging with local students in the U.S. also led to the development of unique projects for their own communities.



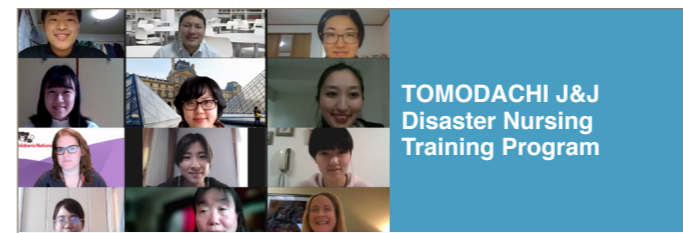
TOMODACHI Boeing Keio SFC Entrepreneurship Seminar

This entrepreneurship program was created to empower youth to develop Japan's future after the Great East Japan Earthquake. Being held online, students worked in groups to create their own business plans to see their ideas become reality. At the end of the program, they took part in an online conference, presenting their business plans to entrepreneurs and program officials.



Building the TOMODACHI Generation: Morgan Stanley Ambassadors Program

This year's program included an eight-session online boot camp where participants discussed key concepts such as career selection and critical workplace skills. This allowed students to have enriching discussions even though they were unable to travel due to COVID-19. The support of the alumni and professionals from Morgan Stanley in Japan bolstered the program and empowered participants.



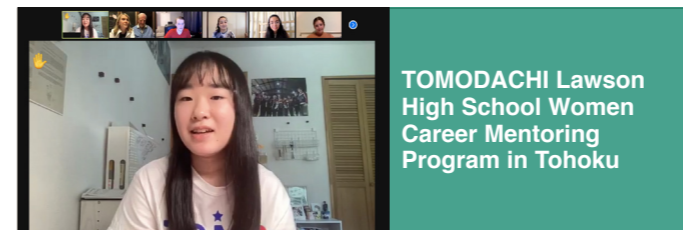
TOMODACHI J&J Disaster Nursing Training Program

Established in 2015, the program aims to deepen nursing students' knowledge of disaster nursing. Despite being held virtually this year, the three programs, the Pre-Trip Seminars, the U.S. Study Tour, and Post-Trip Seminar, were all held in their original format. The eight selected participants felt energized and motivated toward their future success and broadened the field of disaster nursing.



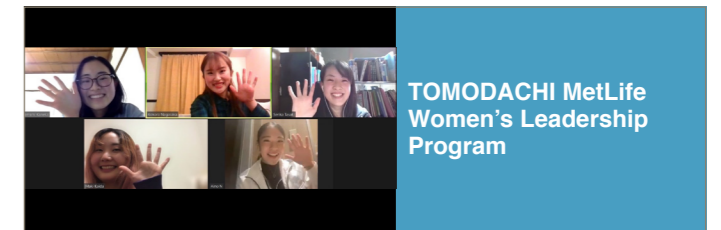
TOMODACHI Family Mart SDGs Leadership Program in Tohoku -Beyond Tohoku to Japan, and Finally, the World-

This five-month long program was conducted virtually, targeting youths who are keen on confronting challenges in the Tohoku area. It was divided into three parts: Tohoku Academy to Support Each Other, Action Course, and Tohoku Special Live to Support Each Other. Participants met peers in the area, took action, made presentations, and joined live broadcasts, all tied to having a sustainable impact in the region.



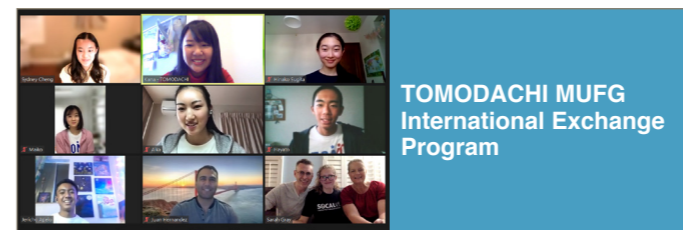
TOMODACHI Lawson High School Women Career Mentoring Program in Tohoku

This five-month long online program supports the career development of 1st and 2nd-year female high school students from Iwate, Miyagi, and Fukushima prefectures. Through workshops, interaction with international students and professionals, and making presentations to their peers, this program boosts students' futures and supports the development of leaders in the Tohoku region.



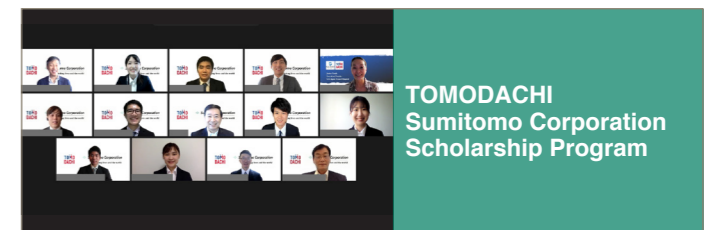
TOMODACHI MetLife Women's Leadership Program

This ten-month long program was held virtually across Osaka, Tokyo, Fukuoka, Naha, and Sapporo, with sessions on mentorship, leadership style, the U.S. trip, and group projects. Participants gained essential skills such as self-awareness, collaboration, pay it forward, global perspective, and resilience, all of which will benefit them in the workplace of the future.



TOMODACHI MUFG International Exchange Program

This year's program was held virtually among junior and high school students from the Tohoku region. Studying abroad virtually, and immersing themselves in the history of Japanese Americans, allowed them to gain global skills and confidence. Interacting with families living in California, and developing self-introduction videos in English encouraged them to learn more English and continue their endeavors as global leaders.



TOMODACHI Sumitomo Corporation Scholarship Program

This year-long study abroad program was created for ten selected participants in need of financial aid. In July, all of the scholars attended the awards ceremony and shared their goals for their study abroad. Participants and alumni of this program have strengthened the relationship between the United States and Japan and set an example on how to be globally minded leaders.



TOMODACHI Summer SoftBank Leadership Program

Established in 2012, this three-week program, encourages Japanese students affected by the Great East Japan Earthquake to explore leadership skills at the University of California, Berkeley. Interaction, observation, and cultural exposure help them to develop an insight into how they can support their own hometowns.

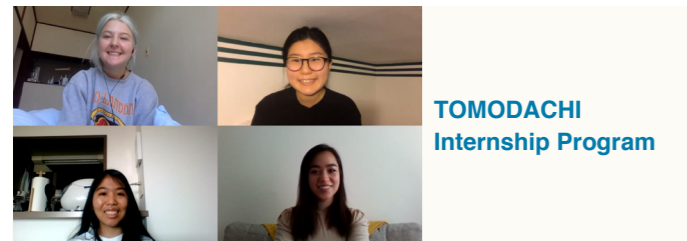


TOMODACHI-UNIQLO Fellowship

This program offers the next generation of business and fashion leaders in Japan a top U.S. graduate education in fashion. In 2021, in spite of the challenges associated with studying during the COVID-19 pandemic, three students completed the program and graduated.

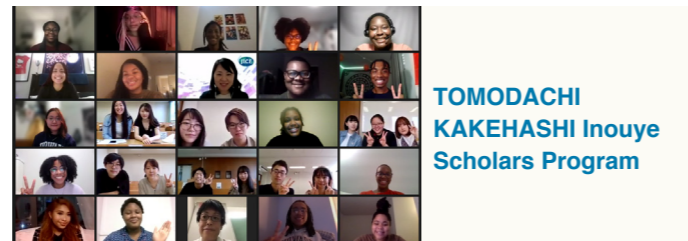
Developing Cross Cultural Leaders

Contributions from donors at the Sponsor and Supporter levels fund a wide range of TOMODACHI programs, including educational exchanges, leadership development programs, and cross-cultural programs. In 2021, four diverse programs were carried out through the General Fund Programs, providing 83 participants the opportunity to deepen their understanding of both countries, as well as their own leadership style.



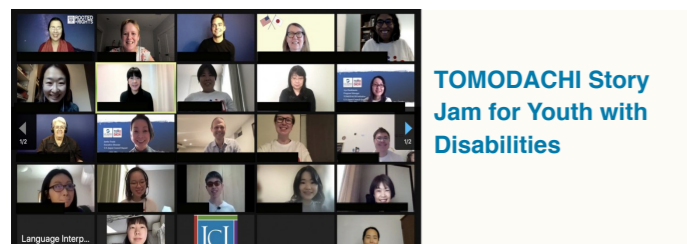
TOMODACHI Internship Program

In 2021, this program held an online debriefing session with five American college students who completed their internship program in Japan. The support of the U.S. Embassy and Temple University, Japan Campus (TUJ) allowed participants to share their experiences of gaining skills, learning about Japanese culture, and life in Japan.



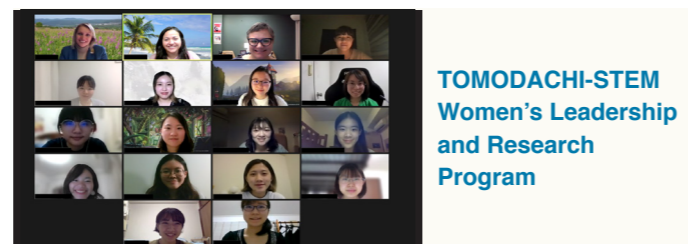
TOMODACHI KAKEHASHI Inouye Scholars Program

Howard University and Oklahoma's Northeastern University paired with Keiwa College and Hokkaido University. Students learned about traditional topics related to indigenous culture, allowing them to explore the history of Japan. Group presentations and small discussions enabled students to deepen their knowledge on culture and about each other.



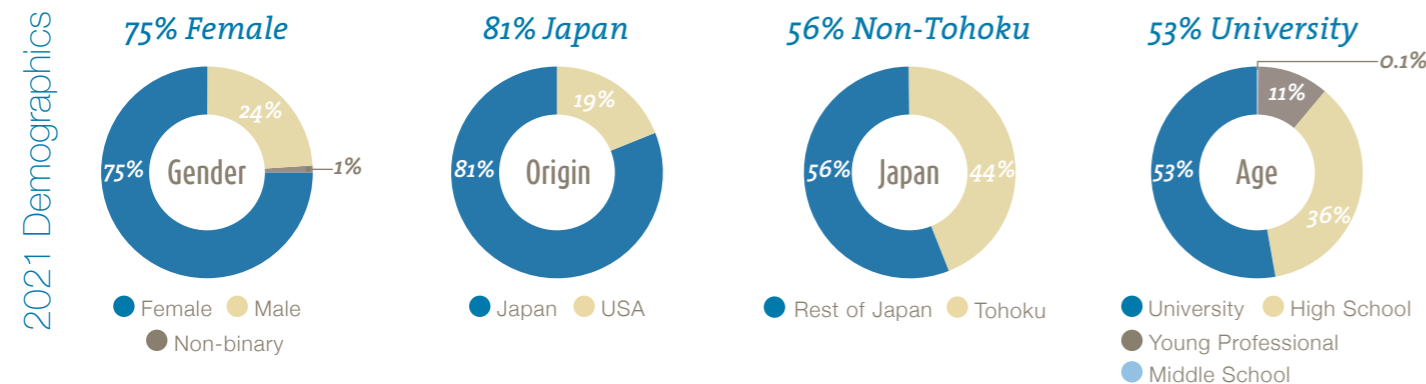
TOMODACHI Story Jam for Youth with Disabilities

This digital storytelling and leadership program was held for ten young Japanese and American professionals and students with disabilities. Guest lecturers such as disabled journalists, social media influencers, advocates, and activists all shared their experiences and encouraged youths to bring change, asking them to share their stories to the world.



TOMODACHI-STEM Women's Leadership and Research Program

This program offers internship opportunities and cultural and leadership programming for Japanese female university students. Virtual workshop and sessions allowed them to get ready for their in-person internships, research groups, complete a personal development tool, and preparation for living and conducting research in the United States.



Unshakeable Impact During the Pandemic

Shuri Fujiwara



Until I participated in the TOMODACHI program, I avoided thinking about the experiences of the Great East Japan Earthquake. However, by joining the program, I wanted to face the experiences that I had long been holding before I started my career, to be a better professional.

“I found my confidence through experiencing the TOMODACHI program, which allowed the members to exchange their opinions with respect and mutual agreement.”

I was unable to do everything I had to, and wanted to do with the program due to my busy college schedule. I was always disappointed by the fact that I could not do everything perfectly. However, through the program, I came to realize that I did not have to aim for perfection. I gained skills to do what I had to do while knowing my limitations. I cherish this lesson, now that I started my career as a nurse, doing my best in a new, unfamiliar setting. TOMODACHI, for me, is a place where you can connect with people, respect each other, learn, and grow.

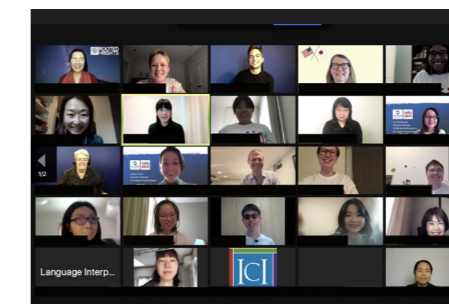


Noah Ohashi

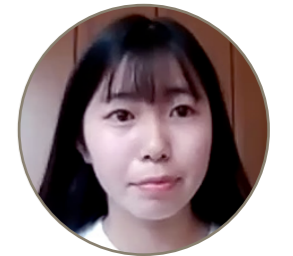


I learned that it is most important to present why the story should be told, more so than how you deliver the story. During the program, when I delved deeper into the story I wanted to tell, I was convinced that what I wanted to convey was the issue of “intersectionality” for people with disabilities in Japan and the United States. I translate this word as “intersecting identities” in Japanese. For example, suppose a person standing in the middle of an intersection is about to be run over by a bus called “sex discrimination” coming from one direction. In that case, the person is likely to be run over by another car called “discrimination against disabilities” coming from another direction. It refers to an experience that makes you feel that way. However, all of these identities are also the pride of the person. As for myself, I was nervous because it was my first time speaking in front of everyone, but I was able to have a conversation in a safe place, which gave me confidence.

“I want to create the future of Japan and the United States with a story that only I can tell.”



Mayuko Fujii



“I came to realize that anyone can be a leader and change the world for a better place.”

The repercussions of the COVID-19 pandemic spread during the time when I was graduating from junior high school. The school was immediately closed, and my whole high school life had been impacted. The planned international training got cancelled and my chances to use English were very limited. I rarely used English in my daily life, but through the TOMODACHI program, I was able to interact with people from the United States. I genuinely enjoyed the time I spent with them. In addition, before I joined the program, I had always thought leadership was a trait that one had to be born with. However, by learning about the history of Japanese American during the program, I came to realize that anyone can be a leader and change the world for a better place.

“TOMODACHI increased my choices to enhance my life more and more.”





Ongoing Engagement

In 2021, TOMODACHI implemented more than 50 programs and events with over 1000 alumni participants. Diverse programs were executed in 2021, with an increase in the community platform and overall engagement. Some notable events included the Global Leadership Academy, Next Generation Summit, RISE Leadership Program, and TOMO-KIN Gatherings, as well as regional events with the U.S. Embassy and Consulates and the Embassy of Japan.

2021 marked the 10th year since the Great East Japan Earthquake that occurred on March 11, 2011. Reflecting on this, TOMODACHI has hosted many events and programs commemorating this disastrous day. To begin with, on March 10th the U.S.-Japan Council and other partner organizations hosted an event to honor the lost lives in the disaster and to discuss the future of the U.S.-Japan alliance. In another event, Unshakable Friendship: Remembrance of 3.11, Tohoku alumni spoke at multiple events all around the U.S. including San Francisco and Washington D.C. Alumni from Tohoku shared their thoughts and memories of the earthquake and efforts they are making in the recovery of their hometowns. In addition to these events, the 10th anniversary of the TOMODACHI Initiative was commemorated in New York. Celebrating the 10th anniversary of TOMODACHI, two alumni from the Tohoku region gave a speech reflecting on their experiences at TOMODACHI. TOMODACHI alumni programs were made possible through the generous support from The Prudential Foundation.

Core Values



Workforce Readiness

As leaders of the next generation, we prepare our alumni to become global jinzai (global citizens) by providing them with the requisite knowledge, skills, and abilities to thrive with a focus on mentorship and peer-to-peer leadership opportunities.



Critical & Innovative Thinking

Out-of-the-box, critical and innovative thinking provide successful and efficient problem-solving skills that are the keys to prosperity in the twenty-first century, and we aim to arm our alumni with these traits.



Civic Engagement

Building upon the global experiences participants gained through TOMODACHI programs, we hope alumni will make a difference in their communities through the development of knowledge, skills, values, and motivation.



Connectedness & Sustainability

As members of the TOMODACHI Generation, alumni will connect with each other to expand their networks and stay engaged as members and leaders of their communities, and really build on those people-to-people relations.

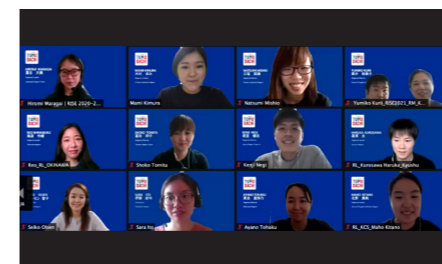
“Part of our charge as the TOMODACHI Generation is to redefine the future of U.S.-Japan relations but also empower other young people to break down barriers and use their voices.”

~ Tristan Norman



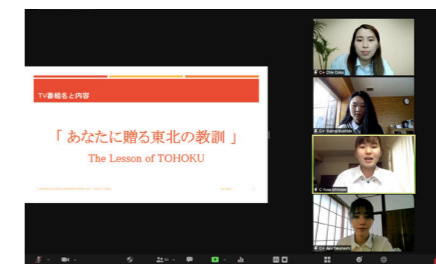
Alumni Highlights

TOMODACHI Regional Impact for Social Empowerment (RISE) Leadership Program



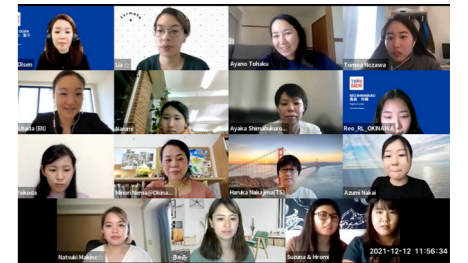
This program was created to reunite, empower, and inspire the TOMODACHI alumni in six regions of Japan. With the program being held virtually in 2021, the event kicked off with a three-day virtual orientation in March with group discussions, guest speakers, and insights from previous leaders and mentors. Followed by a welcome event in June, the program, “Looking Back, Looking Forward: Exploring Opportunities for Social Impact Across Japan” was held in July with over 100 participants. In December, the Alumni Regional Framework Theme Event was held on the second day of the Next Generation Summit 2021, with the expansion of the program to the U.S.

TOMODACHI Generation Global Leadership Academy



Established in 2013, this three-week alumni program was conducted virtually this year. Aimed mainly for the Tohoku TOMODACHI alumni that have studied in the United States, high school and university students gathered together online, strengthening their decision-making skills in the times of crisis and sustainability. This program was divided into three sessions, concluding with a group presentation at the end. Throughout the program, there were cultural exchange sessions with students from the American School in Japan, leaders from Tohoku sharing pivotal points in their careers with difficult decisions, and many guests and alums joining the presentation given by the GLA participants.

Next Generation Summit



This two-day program titled, “Ideas to Action: Breaking Barriers for a Sustainable Community with Enduring Value,” was held in December and is a part of the U.S.-Japan Council’s 2021 Signature Series. Conducted virtually, the TOMODACHI alumni, U40 members, Watanabe Scholars all joined to share their ideas about the significance in their generation. While discussing the U.S.-Japan relationship, participants got the chance to choose from three panel discussions: Climate Change & Sustainability, Inclusion & Diversity, and Education Reform & Youth Empowerment. This two-day program enabled participants to broaden their perspective on their future.

Additional 2021 Alumni Programs

TOMODACHI Alumni Internship Program | U.S.-Japan Council Business Advisory Board Meetings | Career Talks | TOMO-KIN Gatherings





Kazuki Oshiro

“I believe that all of us in TOMODACHI community can give back.”

Kazuki Oshiro is passionate about developing sustainable tourism in Okinawa and creating an environment that is “good to live in and good to visit.” He studied tourism in Hawai‘i for one year through the TOMODACHI program. Utilizing what he has learned in the United States, he aspires to move Okinawa’s unique tourism resources from quantity to quality. His vision is to be a bridge between Japan and the U.S. in light of people-to-people exchanges and tourism.

How has your experience in the TOMODACHI program impacted your career and current activities?

The most important thing was that my way of thinking and perception of things has changed dramatically. The people I met through the program allowed me to broaden my antennae instead of remaining passive and to not be afraid of failure. I was able to experience firsthand what is needed for tourism in Okinawa.

What does TOMODACHI mean to you?

TOMODACHI means many things to me. One is a place where we can improve and inspire each other, and the other is a driving force that motivates us. In particular, I feel that many of the alumni who have participated in the TOMODACHI program have an insatiable appetite for personal growth and every time I meet with them, I am inspired and motivated.

What advice or message would you like to give to students, young professionals, or other alumni?

While participating in the TOMODACHI program, I was very impressed by the word “giving back.” I hope that all alumni can work together to become a person who can give back. I would be happy if I could support the new cohort who are going to participate in the future TOMODACHI programs.



Hinako Murakami

“It is my dream to become a bridge between Japan and the U.S.”

Hinako Murakami was in sixth grade when her hometown, Ishinomaki City in Miyagi Prefecture, was damaged by the 2011 Great East Japan Earthquake. Many foreigners came to her town for relief support. She found it challenging to communicate in English with them. At that time, she could not even say “thank you”. This experience lit her passion to study English, and after joining a TOMODACHI program in her high school, she flew to California to study abroad.

What did you learn from the TOMODACHI program?

In the program, I learned about leadership, community service, and community empowerment. After losing so many things in the Great East Japan Earthquake, the TOMODACHI program helped me turn this into an experience to send out more information and build bridges around the world.

What are your future goals?

While attending community college in California, I visited a Japanese restaurant in Irvine. What surprised me was that they served mackerel from Ishinomaki, my hometown. This inspired me to contribute to my hometown’s fishing industry and think about ways I could help spread the delicious seafood of Ishinomaki. It was fate. This experience made me want to become a bridge between Japan and the U.S.

Please leave a message for others who might join the TOMODACHI program.

I encourage you to step out to the world with confidence. By doing so, you too can broaden your horizons and bring back many experiences. I hope each of you will break your own barriers and change the world as well as your hometown.



Kekoa Erber

“The most significant takeaway from the program was how I was able to discover the way I could contribute to U.S.-Japan relations.”

Kekoa’s passion and interests in Asia and U.S.-Japan relations come from having extended families in Hawaii, Okinawa, and China. After joining the TOMODACHI program, he was inspired to develop a deeper understanding of security issues with a regional focus on East Asia. He is currently pursuing his master’s degree in Security Policy Studies, researching on Asian security and international affairs.

What did you learn from the program?

The most significant takeaway from the program was how I was able to discover the way I could contribute to U.S.-Japan relations. The program allowed me to clearly see what I can do to contribute to the U.S.-Japan relationship. I was also able to strengthen my networking skills by connecting with many great people in the program and utilizing the skills used in my academic career to help connect other people.

What are your future ambitions and how do you view the future of U.S.-Japan relations?

My most immediate goal is to finish my master’s degree and apply my interests in security policy, government relations, Asia and U.S.-Japan relations to my career. Applying what I have learned, I also want to continue learning more about the legislative process in the United States and work with governments to create better policies.

What does TOMODACHI mean to you?

To me, TOMODACHI means community. Meeting people brings opportunities and creates connections and friendships of a similar interest. TOMODACHI is a community I am happy to be a part of and want to continue to advance.



Samsara Counts

“My TOMODACHI experience really propelled me to pursue ethics and technology”

Samsara Counts is a software engineer, researcher, and diversity in tech advocate and has received awards for her research regarding fairness in artificial intelligence. In the TOMODACHI program, she visited Okinawa with her peers in university and it pushed her to pursue the use of technology for peace and justice.

How did the TOMODACHI program impact you?

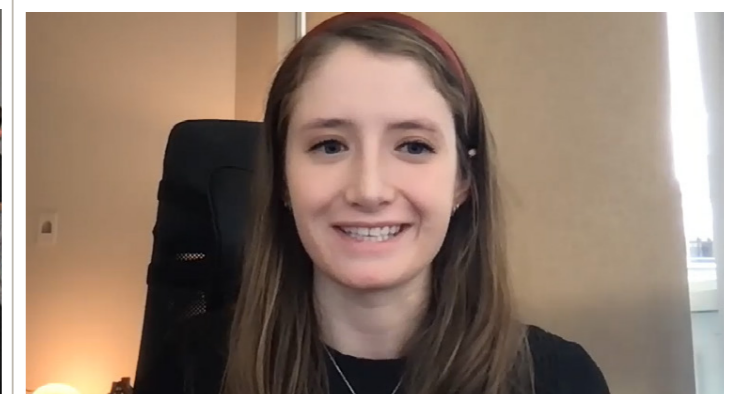
Seeing and hearing the damages caused by the war [World War II] solidified my passion for ethical technology and mitigating harms caused by technology. After the Okinawa trip, I was inspired to pursue computer science and became interested in fairness and accountability research. My TOMODACHI experience really propelled me to pursue ethics and technology.

What’s your future vision?

In the immediate future, I want to keep up with my friends that I met through the TOMODACHI program. On the larger scale, I want to be a researcher who interacts with international collaborators and works with researchers in Japan and all over the world. I would also like to inform the U.S.-Japan and the U.S. transatlantic foreign policies about technology.

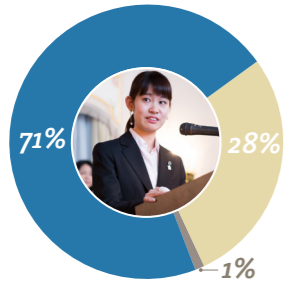
Any advice for the new generation, including those who are interested in technology?

Honestly, I would say to put yourself out there. Life is short and you should not let worries inhibit you from following your passions and things that you are interested in. This is especially true when it comes to technology because the Internet has a wealth of resources to learn about practically every topic. Never be afraid to take those few baby steps toward something you are interested in.



Who are the TOMODACHI Generation?

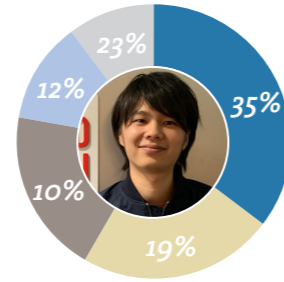
Leadership



More women have taken up our leadership opportunities.

● Female ● Male ● Non-binary

Career



Most alumni are working in, or are interested in going into, business.

● Business ● Education ● Other ● Non Profit ● Government

TOP 3 areas of interest



- Diversity, equity, and inclusion.
- Youth empowerment and education reform.
- Leadership, management, and governance.



Average age of current alumni.

Alumni Action



started a new project or business.



of alumni decided on a career or field of study



asked for a mentor or became a mentor for someone else



The U.S.-Japan Council (U.S.) and the U.S.-Japan Council (Japan) work in collaboration with the U.S. Embassy in Tokyo to implement the TOMODACHI Initiative as a public-private partnership. Implementation includes program development and oversight, communications and outreach, marketing, fundraising, donor relations and management, and operations.

The U.S.-Japan Council is a non-profit 501(c)(3) tax-exempt organization headquartered in Washington, DC with staff in California, Hawaii and Tokyo. The Council is dedicated to strengthening people-to-people connections among Japanese and Americans of all generations. The Tokyo-based U.S.-Japan Council (Japan) is a Public Interest Corporation, Koeki Zaidan Hojin. The two organizations are separate entities, each governed by an independent Board of Directors, which work closely together in the administration of TOMODACHI.

Board of Directors

Board Officers

Suzanne Basalla, *Representative Director*
President and CEO, U.S.-Japan Council

Royanne K. Doi, *Representative Director*
Corporate Governance Specialist

Ryuichi Katayama, *Internal Auditor*

Board Members

Stan Koyanagi
Member of the Board of Directors, Managing Executive Officer,
Global General Counsel, ORIX Corporation

Jenifer Rogers
General Counsel Asia,
Asurion Japan Holdings G.K.

Gary Moriwaki
Partner, Windels Marx Lane & Mittendorf, LLP

Miyuki Tani
Executive Director, Morgan Stanley Capital K.K.

Takashi Ohde
Advisor, Gakushuin Women's College Institute
of International Studies

Henry Takata
Representative Director, SynTech Japan Co., Ltd.

Board of Councilors

Board Officer

Kathy Matsui, *Chair*
General Partner,
MPOWER Partners

Board Members

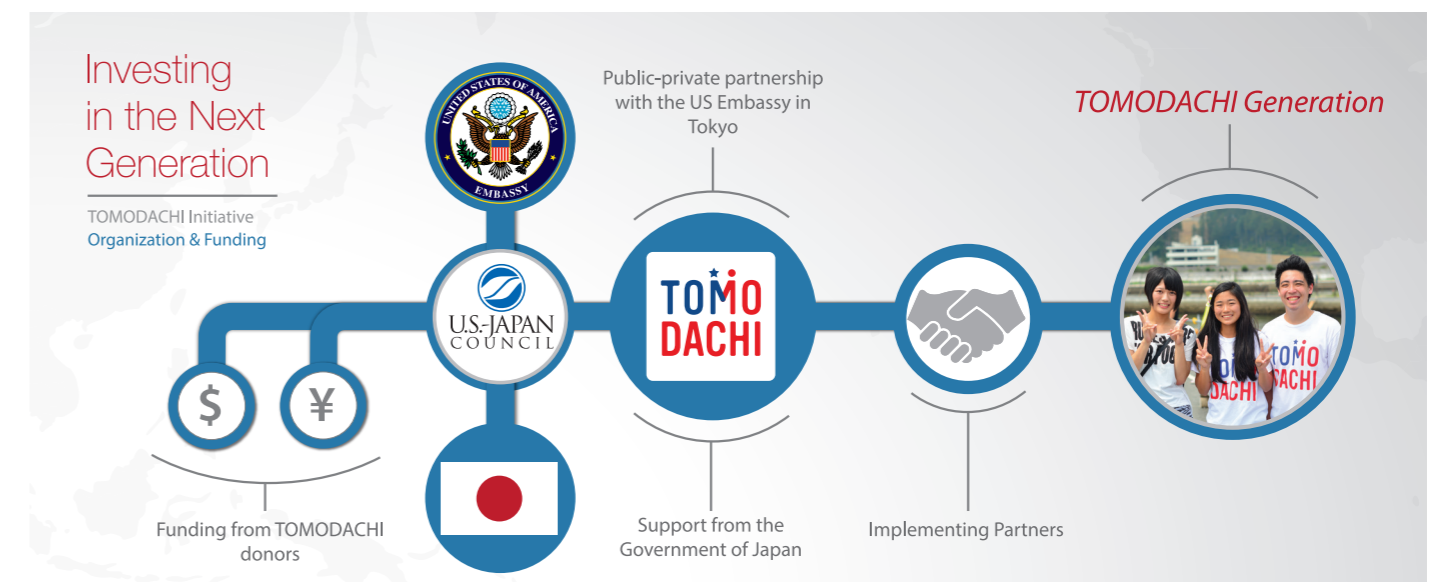
Daniel Fujii
President & CEO,
Trust Capital Co., Ltd.

William Ireton
Head of Production (Japan),
Sony Pictures International
Productions

Merle Aiko Okawara
Chairman, DELSOLE
Corporation

(as of December 31, 2021)

Our appreciation to the Board of Directors and Councilors of the U.S.-Japan Council in the U.S. for their support. Their names are found at: <https://www.usjapanCouncil.org/board-of-directors-us> | <https://www.usjapanCouncil.org/board-of-councilors>



"TOMODACHI means a willingness to learn about a relationship that you thought you already understood. U.S.-Japan relations is a well-rounded relationship with so many different parts that I can only begin to understand."

~ Mikka Kei Macdonald



Thank You

Founding Strategic Partners

(\$1,000,000 or more, with initial donation in 2012)



Strategic Partners

(\$1,000,000 or more)



Sponsors

(\$100,000 - \$1,000,000)



Supporters

\$10,000 - \$100,000

ExxonMobil Japan
Hayasaka Tax Accountants' Office Co., Ltd.

Imperial Hotel, Ltd.
Japan Association of Charitable Organizations

KPMG AZSA LLC
Orrick, Herrington & Sutcliffe LLP
Tricor K.K.

TOMODACHI in the Spotlight

We thank our many corporate partners for raising the profile of the TOMODACHI Initiative and spreading the word about the importance of U.S.-Japan youth exchange.



ANA airplanes display the TOMODACHI logo



TOMODACHI signage throughout Haneda Airport

Implementing Partners

TOMODACHI works with many partners in order to make these life-changing experiences possible for young people. In 2021, the following partners implemented programs based on TOMODACHI grants:

Children's National Medical Center | Cultural Vistas | ETIC. (Entrepreneurial Training for Innovative Communities) | Fashion Institute of Technology | General Foundation SFC Forum | The Japanese Association of the Experiment in International Living | Japan International Cooperation Center | Jibun Mirai Club | Laurasian Institution | Lehigh University | Lumina Learning | Parsons The New School for Design | Rice University | Temple University | University of Massachusetts Boston | The Washington Center |

Financial

Cumulative TOMODACHI Commitments by Year (USD)
U.S.-Japan Council (Consolidated)

TOMODACHI CONTRIBUTIONS AND PLEDGES	2011-2020	2021	2022-24 (committed)	TOTAL
USJC (Japan)	\$34,657,149	\$353,193	\$902,564	\$35,912,905
USJC (US)	23,186,590	543,808	450,000	24,180,398
Total Contributions and Pledges	57,843,739	897,001	1,352,564	60,093,303
In-kind Donations (US-Japan)	5,239,611	0	20,000	5,259,611
Total Contributions and Pledges	\$63,083,350	\$897,001	\$1,372,564	\$65,352,914

TOMO DACHI

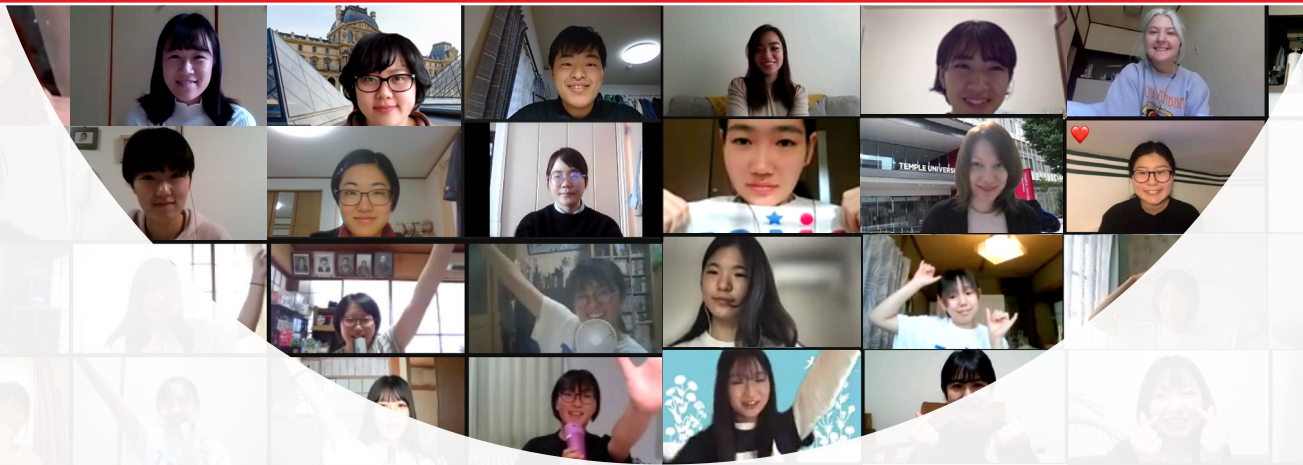


 @TOMODACHI

 @USJapanTOMODACHI

 @USJapanTOMODACHI

 @TOMODACHI_initiative



 tomodachi.org 